

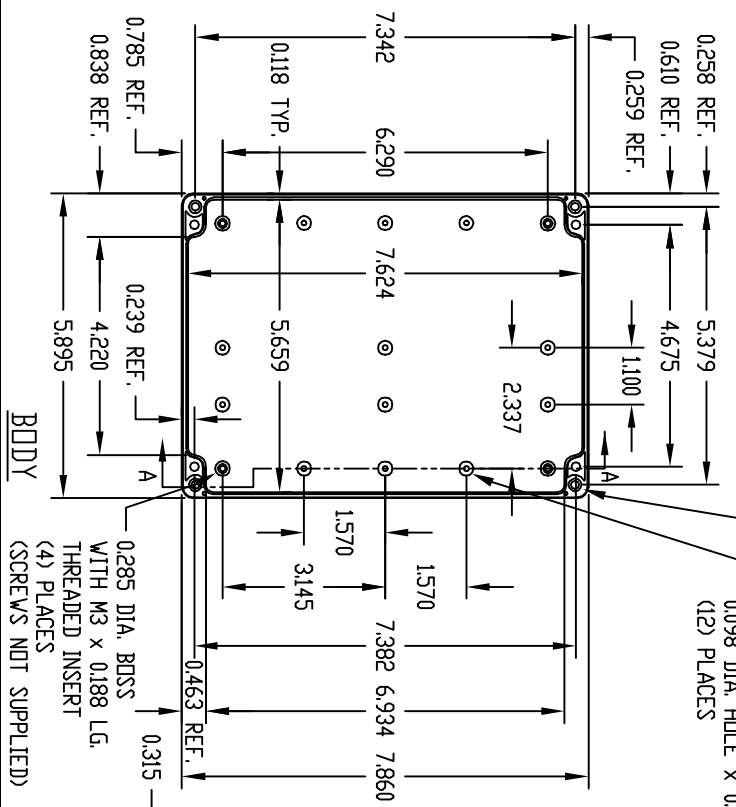
PART NAME	NEMA 4X ENCLOSURE	PART No.	PNR-2607, PNR-2608, PNR-2607-C AND PNR-2608-C AND PNR-2607-DG AND PNR-2608-DG
-----------	-------------------	----------	---

INDUSTRY STANDARDS:

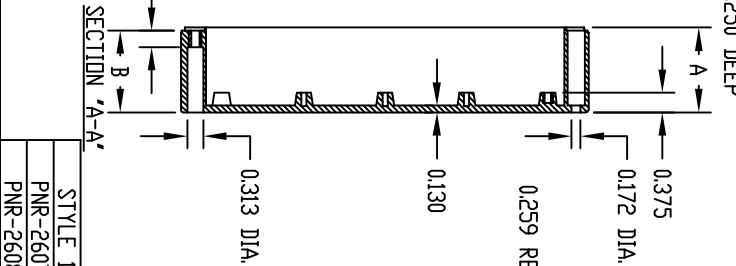
POLYCARBONATE (LIGHT GRAY AND CLEAR)
 UL 94V-2 FLAMMABILITY RATING
 (UL FILE #E41613)
 UV STABILIZED
 SERVICE TEMPERATURE RANGE:
 -40°C TO +120°C
 ABS (DARK GRAY)
 UL 94-HB FLAMMABILITY RATING
 (UL FILE #E56070)
 SERVICE TEMPERATURE RANGE:
 -40°C TO +80°C

STYLE 1: LIGHT GRAY POLYCARBONATE BODY AND COVER.
 STYLE 2: LIGHT GRAY POLYCARBONATED BODY AND CLEAR POLYCARBONATE COVER.
 STYLE 3: DARK GRAY ABS BODY AND COVER.
 ALL STYLES CONTAIN HARDWARE KIT WITH (4) M4 x 0.668" LG. SCREWS FOR ASSEMBLY.

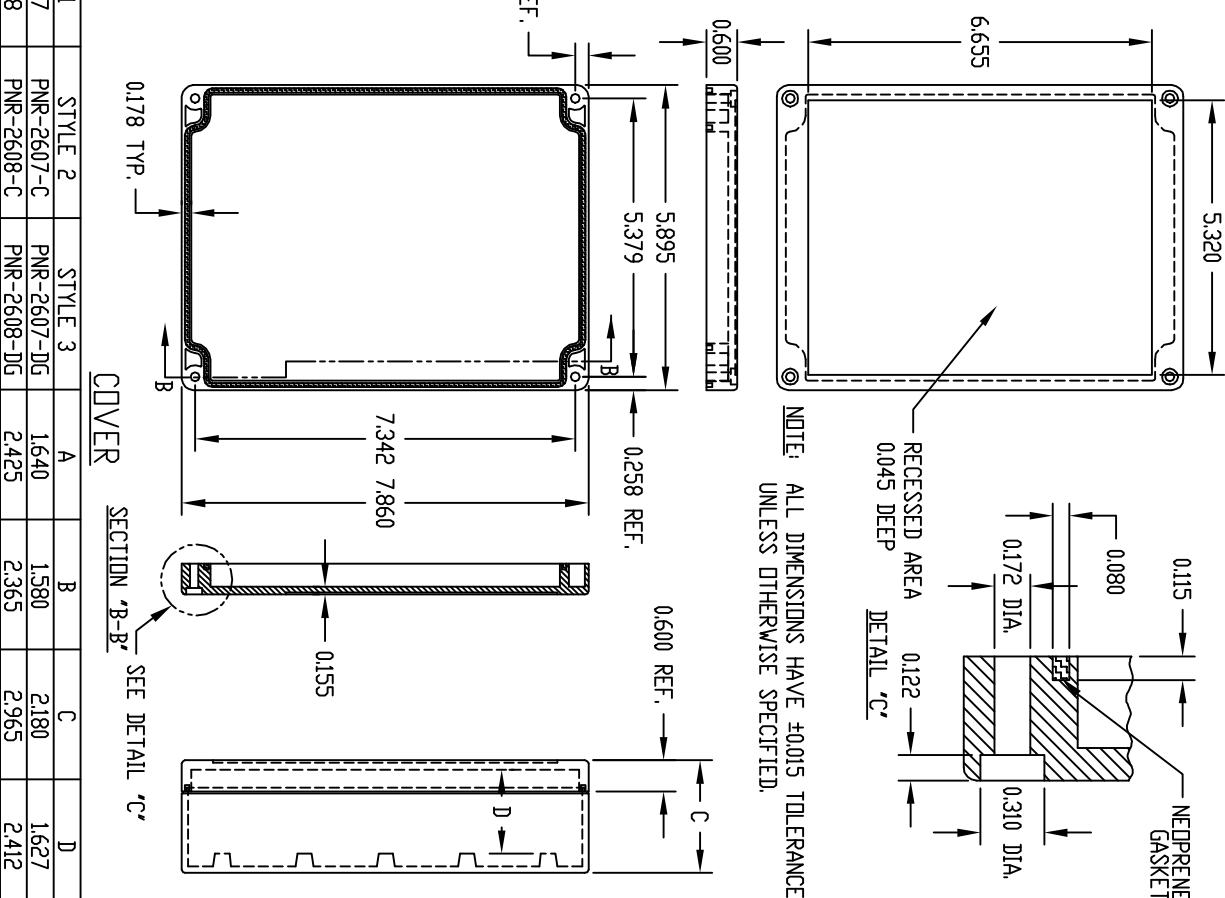
(*) MOUNTING BOSSES USE EITHER M2.5 METRIC OR #4 STD. SHEET METAL SCREWS x 0.188" LG. (NOT SUPPLIED)



M4 x 0.315 LG. THREADED INSERT (4) PLACES
 0.275 DIA. BOSS (*) WITH 0.098 DIA. HOLE x 0.250 DEEP (12) PLACES



NOTE: ALL DIMENSIONS HAVE ±0.015 TOLERANCE UNLESS OTHERWISE SPECIFIED.



STYLE 1	STYLE 2	STYLE 3	A	B	C	D
PNR-2607	PNR-2607-C	PNR-2607-DG	1.640	1.580	2.180	1.627
PNR-2608	PNR-2608-C	PNR-2608-DG	2.425	2.365	2.965	2.412